

# FRIGIDAIRE

## Factory Parts Catalog

|                           |               |
|---------------------------|---------------|
| Product No.               | FFEF3013XWA   |
| Series                    | 30" f/s elec  |
| Color                     | white         |
| Market                    | North America |
| Owner's Guide             | 316463004     |
| Installation Instructions | 316454926     |
| Service Data Sheet        | 316905249     |

### Frigidaire

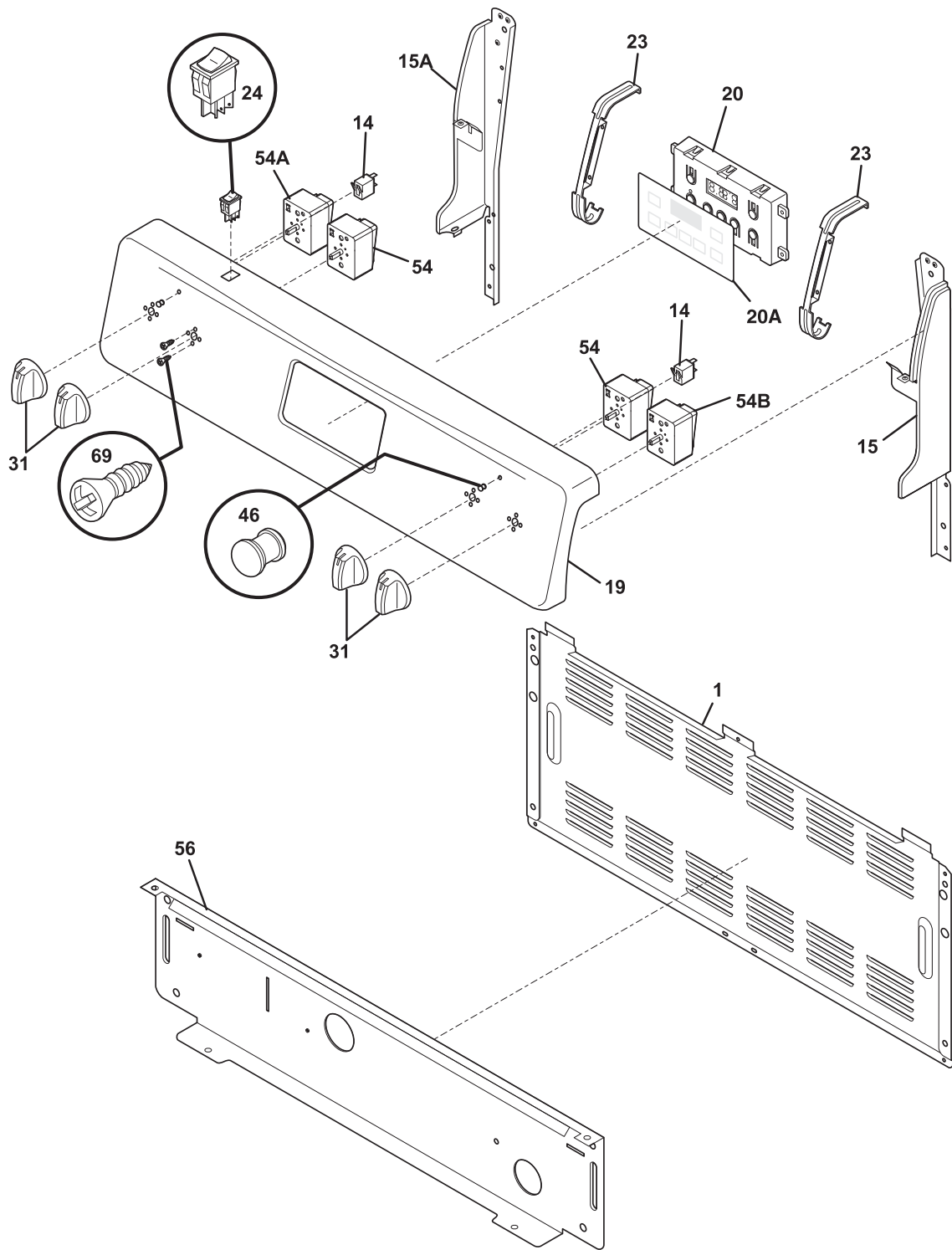
P.O. BOX 8020  
CHARLOTTE, NC 28262

Publication No.  
**5995613469**  
12/05/24  
(EN/SERVICE/VJW)  
369

### 30-INCH FREE- STANDING ELECTRIC RANGE

Model No.  
FFEF3013X

**BACKGUARD**

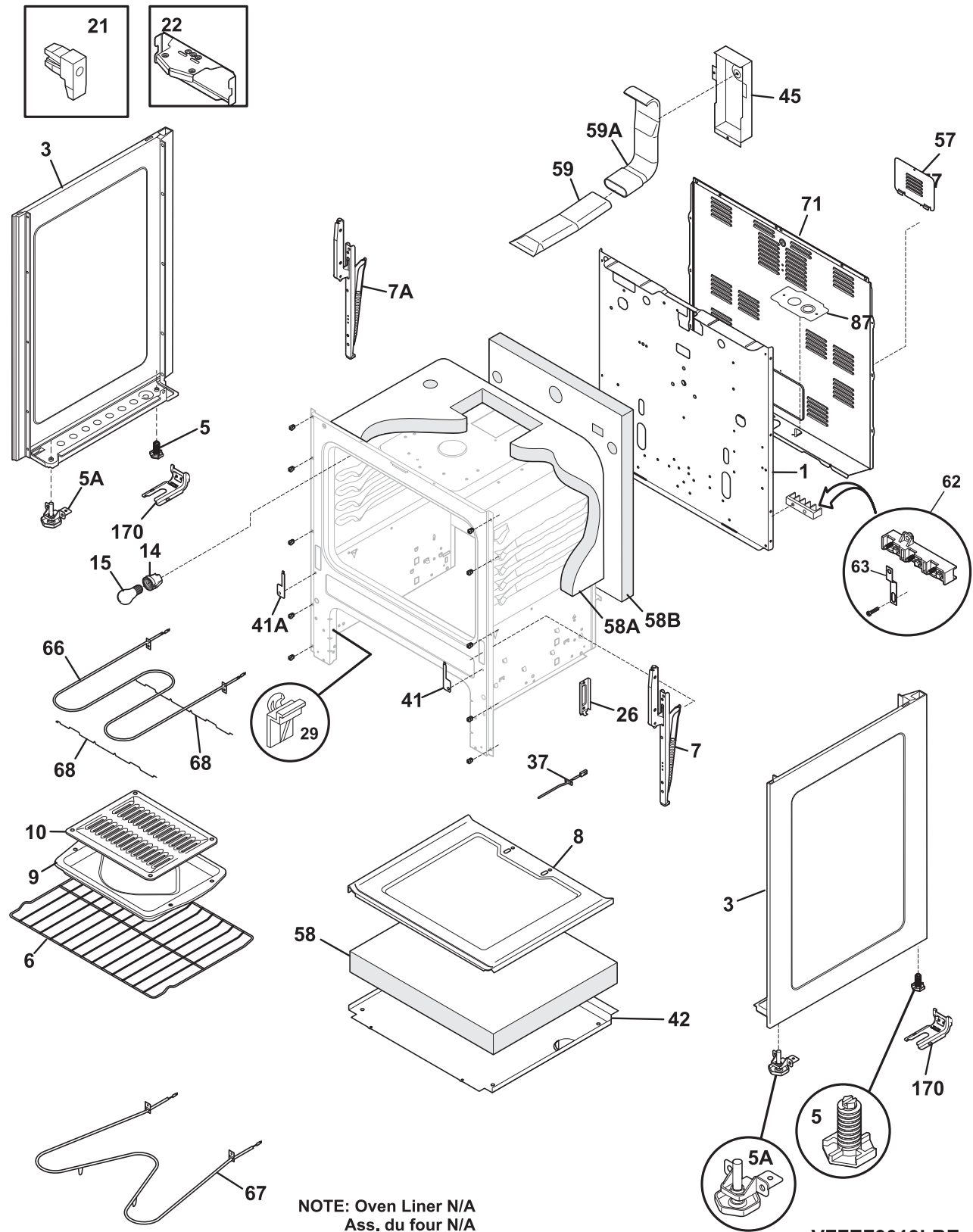


CFFE3013XWA

**BACKGUARD**

| POS. NO | PART NO.   | DESCRIPTION                                 |
|---------|------------|---|
| 1       | 316281800  | Shield, backguard, rear wall                |
| 14      | 316022500  | Light/Lamp, indicator, 125 V                |
| 15      | 316411403  | Support, backguard, white, RH               |
| 15A     | 316411402  | Support, backguard, white, LH               |
| 19      | 316541653  | Panel-Bkgd, white                           |
| 20 #    | 316455400  | Clock/Timer, electronic, ES100              |
| *       | 316021110  | Screw, 8-18 x 0.5, black                    |
| 20A     | 316220722  | Overlay, clock, white                       |
| 23      | 316441600  | Bracket-clock mtg, black                    |
| 24 #    | 316448701  | Switch, rocker, white, oven light           |
| 31      | 316543800  | Knob, control, white, (4)                   |
| 46      | 316557300  | Lens-light/lamp, indicator, clear           |
| 54 #    | 316436000  | Switch, infinite, small element             |
| 54A#    | 316436001  | Switch, infinite, large element             |
| 54B#    | 316238201  | Switch, infinite radian, dual               |
| 56      | 316234012  | Shield, backguard, white, inner             |
| 69      | 5303288565 | Screw, truss sqdr, 8-32 x 3/16, switch mtg  |
| *       | 316021105  | Screw, hex head cup pt, 8-18 x 0.375, black |
| *       | 316021109  | Screw, 8-18 x 0.5, chrome                   |
| *       | 316089500  | Screw, 10-16 x .486                         |

**BODY**



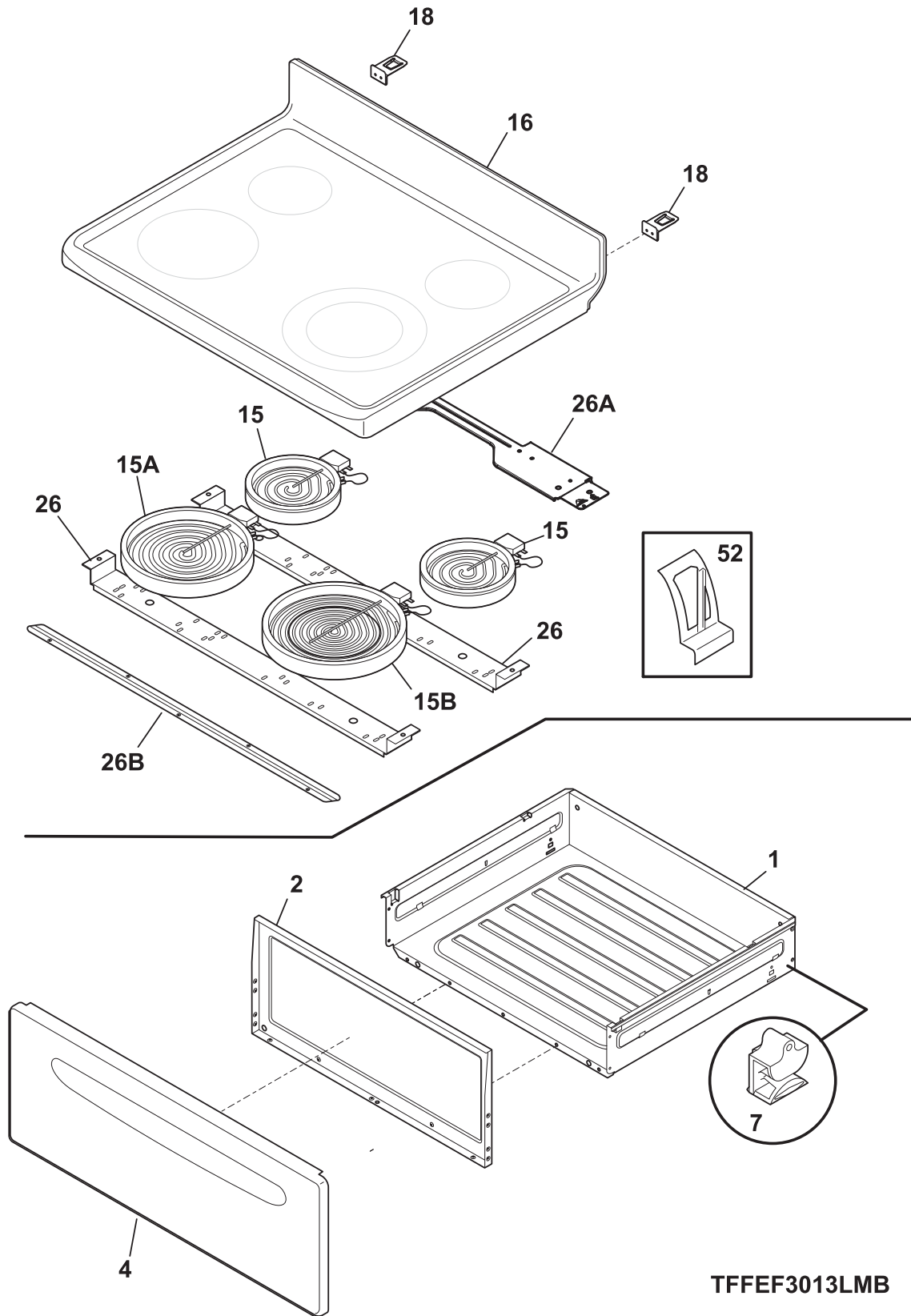
NOTE: Oven Liner N/A  
Ass. du four N/A

VFFEF3013LBE

**BODY**

| POS. NO | PART NO.   | DESCRIPTION   |
|---------|------------|---|
| 1       | 316201301  | Back, main  |
| 3       | 316400116  | Panel, bodyside, white, RH                          |
| 3       | 316400117  | Panel, bodyside, white, LH                          |
| 5       | 316272900  | Screw, leveling, plastic, rear, (2)                 |
| 5A      | 316498900  | Leveling Leg Assy, metal, front, (2), bracket & leg |
| 6       | 316067902  | Rack, oven, (2)                                     |
| 7       | 316566204  | Hinge, oven door, RH                                |
| 7A      | 316566205  | Hinge, oven door, LH                                |
| *       | 316418901  | Screw, trilobe, 10-32 x 5/16", black                |
| 8       | 316201501  | Panel, sump, oven bottom                            |
| 9       | 316081900  | Pan, broiler OPTIONAL ACCESSORY                     |
| 10      | 316082000  | Insert, broiler pan OPTIONAL ACCESSORY              |
| 14      | 316116400  | Receptacle, oven light                              |
| 15      | 316538901  | Lamp, oven light                                    |
| 21      | 316408000  | Clip, bodyside                                      |
| 22      | 316286300  | Bracket-bodyside, (2)                               |
| *       | 316279600  | Screw, bracket, stiffener, (4)                      |
| 26      | 316206300  | Support, chassis, (2)                               |
| 29      | 316407301  | Glide, drawer, front                                |
| 37 #    | 316233902  | Probe, oven temp                                    |
| 41      | 316233400  | Cover, hinge cutout, RH                             |
| 41A     | 316233500  | Cover, hinge cutout, LH                             |
| *       | 3131737    | Washer, black                                       |
| *       | 5303285179 | Screw, wafer head, 8-32T x 0.500, black             |
| 42      | 316547400  | Shield, wool, lower                                 |
| 45      | 316234100  | Shield, wire, vent tube                             |
| 57      | 316283600  | Cover, access                                       |
| 58      | 3200847    | Insulation, oven bottom                             |
| 58A     | 316047707  | Insulation, 1", oven wrapper                        |
| 58B     | 316054202  | Insulation, 1", oven back                           |
| 59      | 316208201  | Tube, oven vent, lower                              |
| *       | 316089500  | Screw, 10-16 x .486                                 |
| 59A     | 316208304  | Tube, oven vent, upper                              |
| 62 #    | 5303935271 | Terminal Block Kit                                  |
| 62*     | 316001003  | Screw, ground wire                                  |
| 62*     | 316205500  | Nut, hex flange, 3/8 10-32                          |
| 63      | 316542600  | Plate, grounding strap                              |
| *       | 5303289910 | Screw, 8A, 1"                                       |
| 66 #    | 316199900  | Element, broil                                      |
| 67 #    | 316225001  | Element, bake                                       |
| 68      | 316203400  | Support, broil element                              |
| 71      | 316283200  | Shield, rear wall                                   |
| 71*     | 316248900  | Spacer, shield, rear wall                           |
| 87      | 316081200  | Bracket, cable mtg                                  |
| 170     | 316112004  | Anti Tip Kit, assembly                              |
| 170*    | 316107200  | Bracket, anti-tip                                   |
| 170*    | 316116000  | Screw, concrete, 1.75", anti-tip brkt               |
| 170*    | 316541700  | Template, anti-tip                                  |
| * #     | 316580020  | Harness, wiring, main                               |
| *       | 316444100  | Plate-weight, (3)                                   |
| *       | 316210800  | Plug, button  |
| *       | 316021105  | Screw, hex head cup pt, 8-18 x 0.375, black         |
| *       | 316021108  | Screw, cup pt, 8-18 x 0.375, chrome                 |
| *       | 316021110  | Screw, 8-18 x 0.5, black                            |
| *       | 5303271648 | Screw, wafer hd sq dr, 8-18AB x 0.5                 |

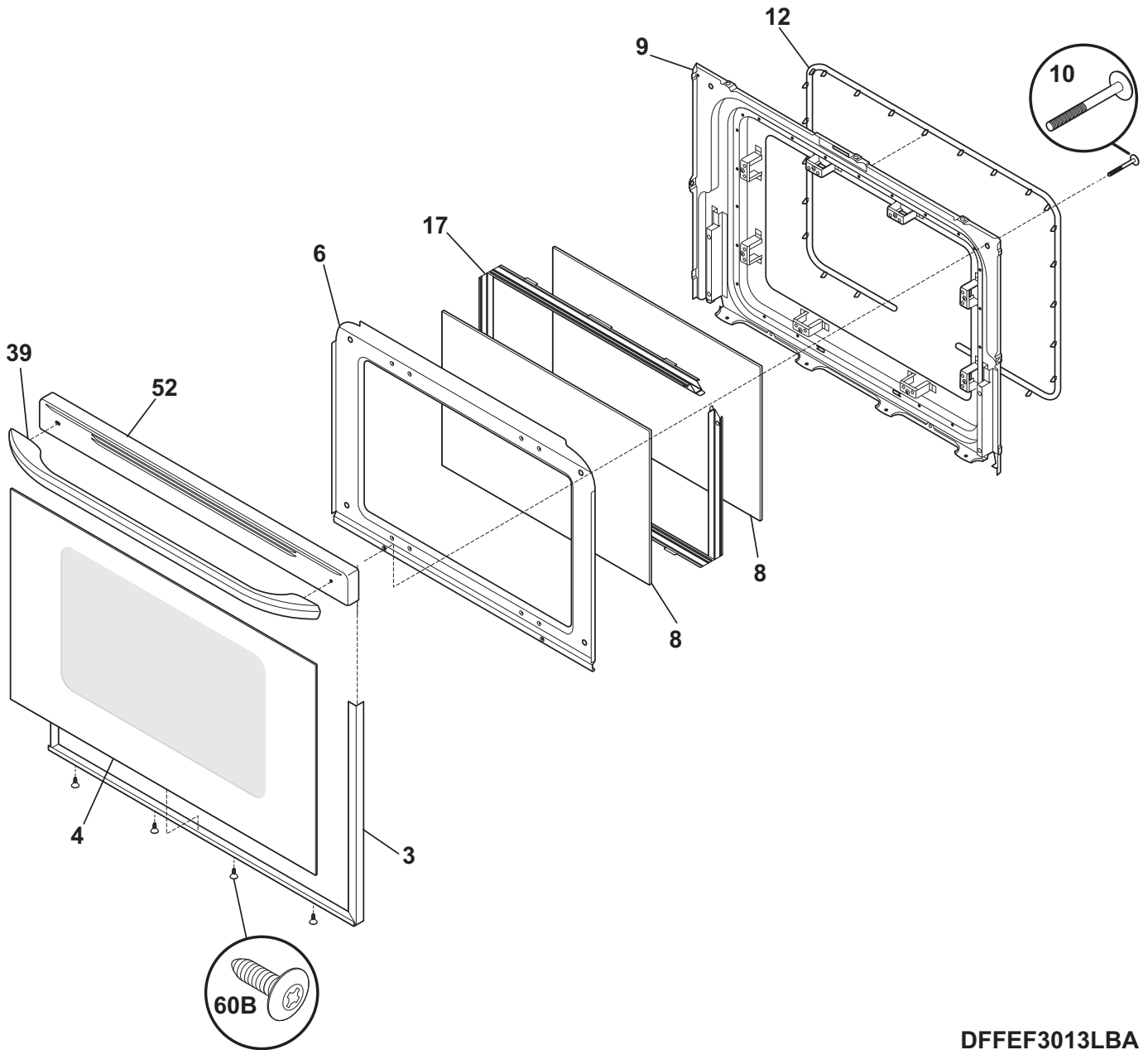
**TOP/DRAWER**



**TOP/DRAWER**

| POS. NO | PART NO.   | DESCRIPTION   |
|---------|------------|---|
| 1       | 316408703  | Drawer, utility   |
| 2       | 316284800  | Liner, drawer   |
| 4       | 316231305  | Panel, drawer, white                                    |
| 7       | 316407400  | Glide, drawer, rear                                     |
| 15 #    | 318178110  | Element, surface, 6", 1200, (2), radiant                |
| 15A#    | 316135401  | Element, surface, 9", 2500 W, radiant                   |
| 15B#    | 316555800  | Element, dual, 9"6", surface, 1300W/1200W, (2), radiant |
| 16      | 316531947  | Maintop, steel/glass, white                             |
| 18      | 316580800  | Bracket-hinge, main top                                 |
| 26      | 316427603  | Channel, element support, (2)                           |
| 26A     | 316498200  | Bracket-support, chassis, aluminum                      |
| 26B     | 316214202  | Bracket, chassis support, front                         |
| 52      | 316461700  | Clip, element mtg                                       |
| *       | 316468100  | Cleaner, smoothtop, w/sponge                            |
| * #     | 316580479  | Harness, wiring, surface units                          |
| *       | 316021105  | Screw, hex head cup pt, 8-18 x 0.375, black             |
| *       | 316021109  | Screw, 8-18 x 0.5, chrome                               |
| *       | 316089500  | Screw, 10-16 x .486                                     |
| *       | 5308014215 | Screw, 6-20 x 0.312                                     |

**DOOR**



**DFFEF3013LBA**



---

**DOOR**


---

| POS. NO | PART NO.   | DESCRIPTION                                  |
|---------|------------|--|
| 3       | 5303935347 | Trim kit-door, 3 sided, white, w/tape        |
| 4       | 316202818  | Glass, oven door, white, outer               |
| 6       | 316222711  | Shield, wool, black, oven door               |
| 8       | 316237100  | Glass, oven door, clear, heat barrier, (2)   |
| 9       | 316230629  | Liner, oven door                             |
| 10      | 316278700  | Screw, wafer head, 10-14 x 1 3/8, handle mtg |
| 12      | 316239700  | Seal, oven door                              |
| 17      | 316117701  | Spacer, door glass, (2)                      |
| 39      | 316545301  | Handle, door/drawer, white                   |
| 52      | 316491200  | Cap, door trim, white                        |
| 60B     | 316021110  | Screw, 8-18 x 0.5, black                     |
| *       | 316021109  | Screw, 8-18 x 0.5, chrome                    |
| *       | 5303271648 | Screw, wafer hd sq dr, 8-18AB x 0.5          |